

West Green Road , London, N15 3PA

Nestled on West Green Road in London, this charming split-level flat offers a delightful living experience. Spanning 495 square feet, the property features two spacious bedrooms, making it ideal for small families or professionals seeking a comfortable home.

Recently refurbished throughout, the flat is presented in excellent condition, ensuring a fresh and modern atmosphere. The open-plan kitchen and living area create a welcoming space, perfect for both relaxation and entertaining. With underfloor heating and double-glazed windows, the flat promises warmth and energy efficiency, enhancing your comfort throughout the year.

Conveniently located, residents will enjoy easy access to Seven Sisters, providing excellent transport links and a variety of local amenities. This property is a wonderful opportunity for those looking to settle in a vibrant area of London while enjoying the benefits of a modern, well-maintained home. Don't miss the chance to make this lovely flat your own.

Epc Rating C Council Tax Band D

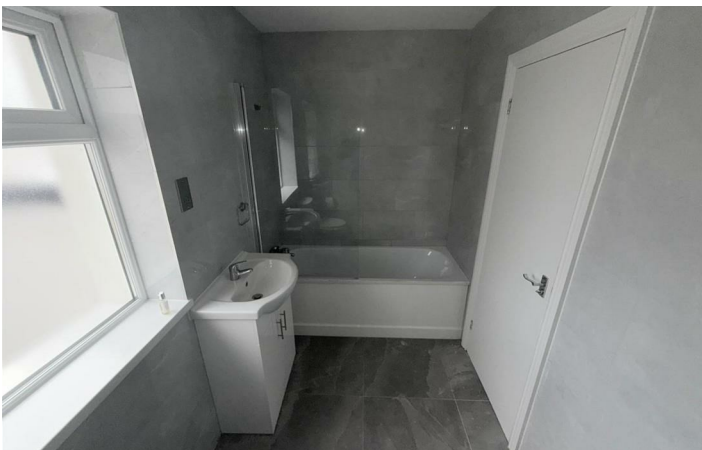
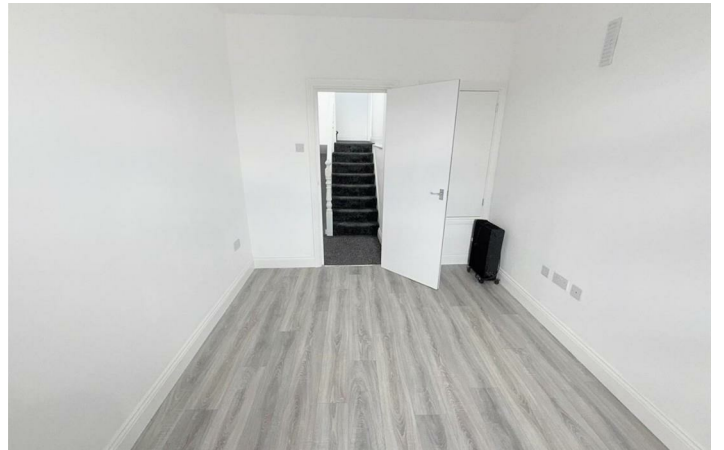
£2,000 Per Month

West Green Road

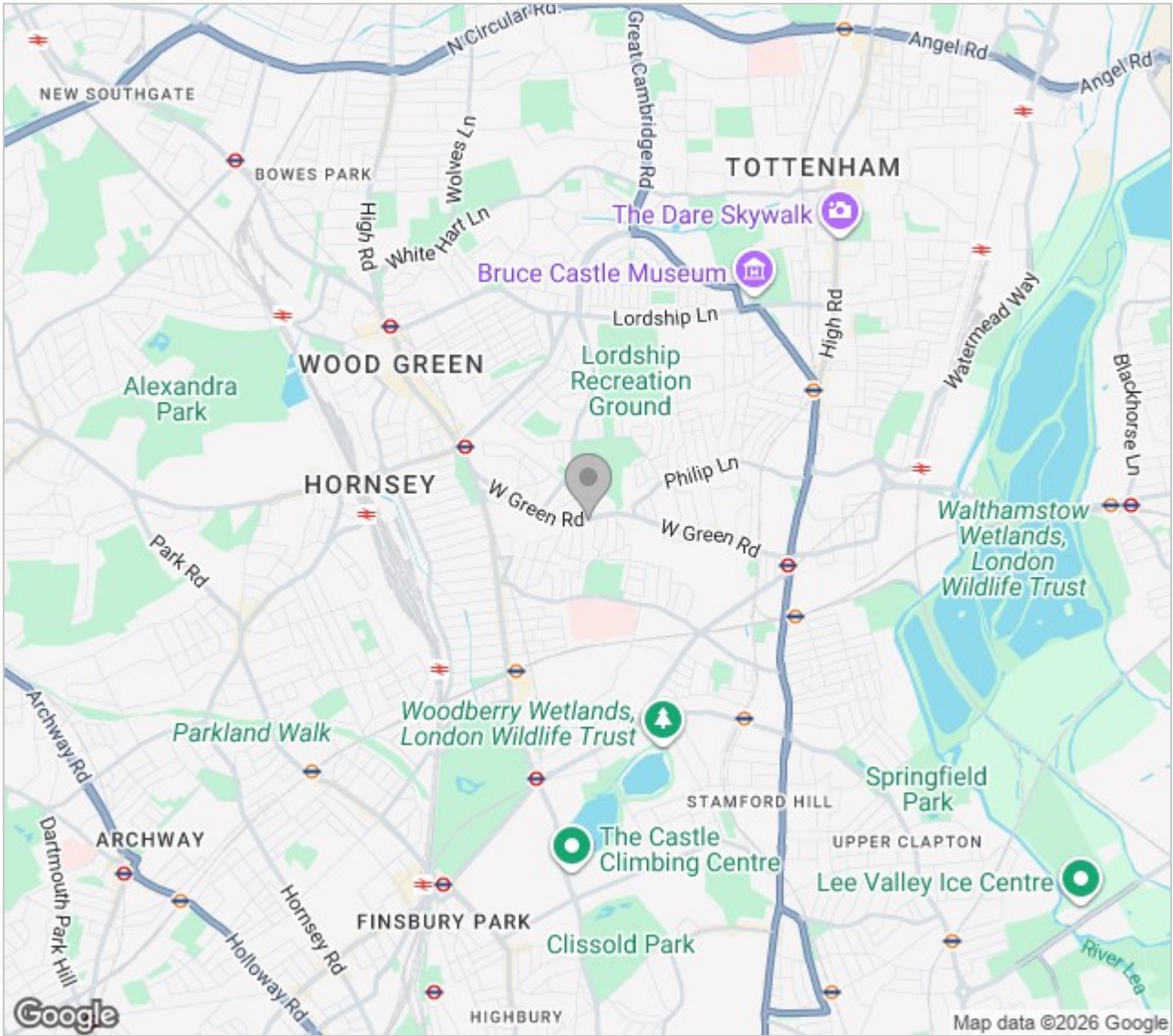
, London, N15 3PA



Directions



Area Map



| Energy Efficiency Rating | | Current | Potential |
|---|-------------------------|---------|-----------|
| Very energy efficient - lower running costs | | | |
| (92 plus) A | | | |
| (81-91) B | | | |
| (69-80) C | | | |
| (55-68) D | | | |
| (39-54) E | | | |
| (21-38) F | | | |
| (1-20) G | | | |
| Not energy efficient - higher running costs | | | |
| England & Wales | EU Directive 2002/91/EC | 73 | 73 |

| Environmental Impact (CO ₂) Rating | | Current | Potential |
|---|-------------------------|---------|-----------|
| Very environmentally friendly - lower CO ₂ emissions | | | |
| (92 plus) A | | | |
| (81-91) B | | | |
| (69-80) C | | | |
| (55-68) D | | | |
| (39-54) E | | | |
| (21-38) F | | | |
| (1-20) G | | | |
| Not environmentally friendly - higher CO ₂ emissions | | | |
| England & Wales | EU Directive 2002/91/EC | | |

These particulars, whilst believed to be accurate are set out as a general outline only for guidance and do not constitute any part of an offer or contract. Intending purchasers should not rely on them as statements of representation of fact, but must satisfy themselves by inspection or otherwise as to their accuracy. No person in this firm's employment has the authority to make or give any representation or warranty in respect of the property.



5 Turnpike Parade Green Lanes, London, N15 3EA
 Tel: 0208 888 3556 Email: info@easypropertieslondon.co.uk
www.easypropertieslondon.co.uk